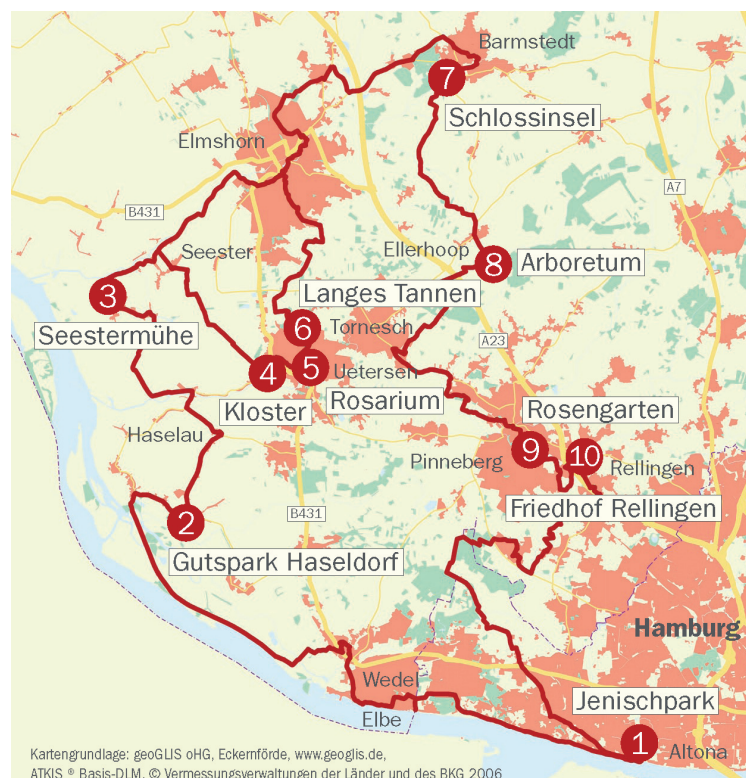




Trail 4 Pinneberg: Of Nursery Barons and Plant Hunters

As the largest area of tree nurseries in Europe, the district of Pinneberg with its rich tradition of nurseries is home to many interesting and important presentation and trial gardens. An unusually broad range of plant species and varieties can be found here.

World-famous nurseries with their specialist gardens, estate parks with impressive dendrological rarities, as well as avenues radiating far into the landscape all form part of the district's garden culture. The gardens reflect the search for new plant varieties from all over the world, the important cultivation activities conducted by long-established nursery families—the rose, shrub and rhododendron growers—, and the global distribution of their new cultivars. The trail highlights these garden features which are distinctive to Pinneberg and reveals the often hidden traces of the nursery barons and plant hunters which still remain in the gardens.



The map shows the route of Trail 4: Pinneberg.

The trail is designed for cyclists, but sections of it are also accessible by car. For day trips, individual starting points can be reached by S-Bahn and regional trains from Hamburg, and the tour commences from these points by bicycle. Total length of the trail: approximately 105 km.

www.gartenrouten-sh.de